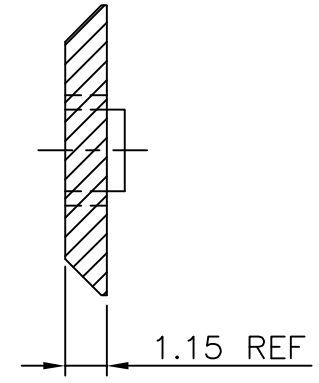
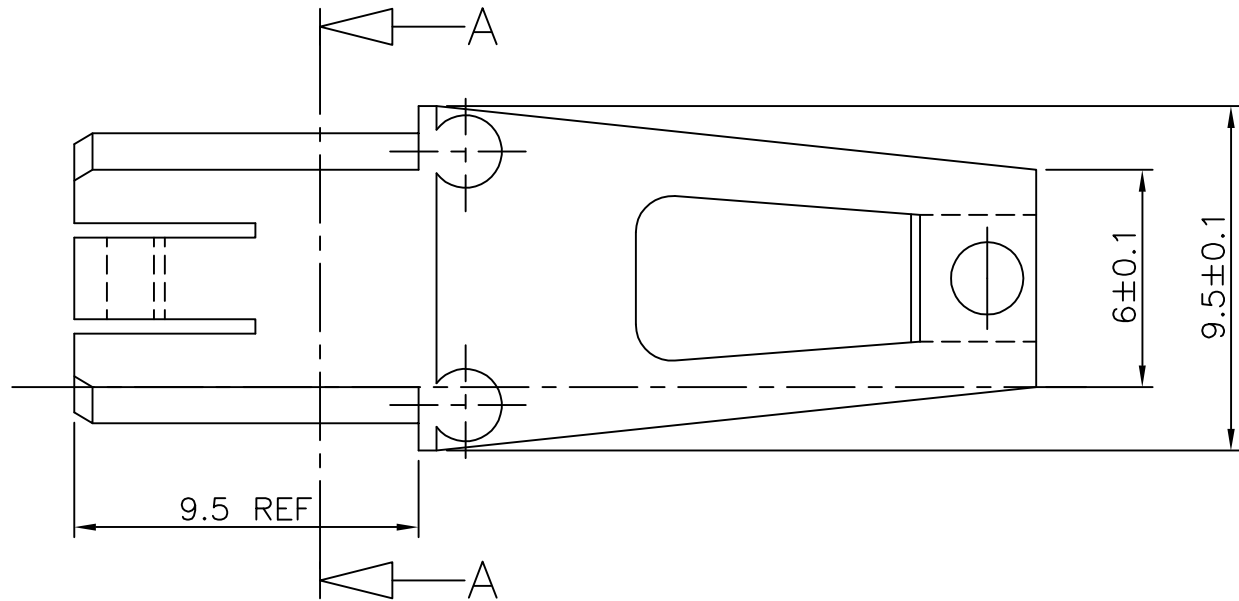
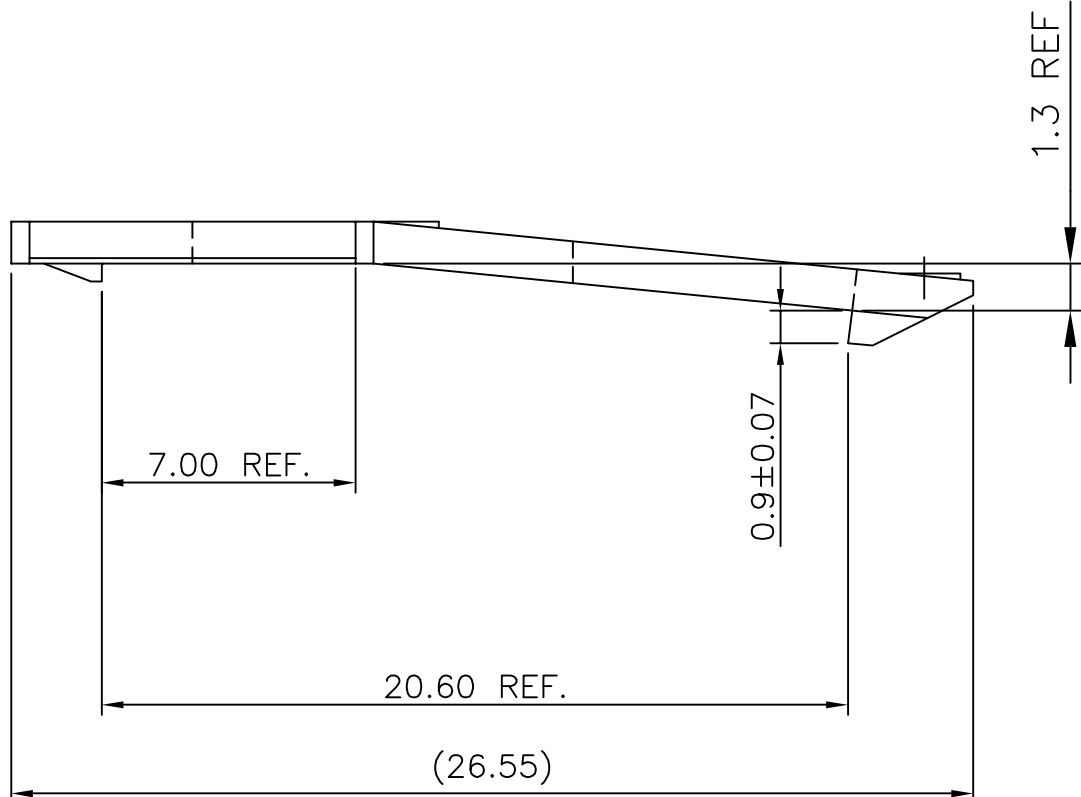


PRODUCT NUMBER	MATERIAL	COLOR	FLAME RETARDANT
65182-001	THERMOPLASTIC POLYESTER, 30% G.F.	GREY	UL-94-V0



SECTION A-A



NOTES:-

1. THIS PRODUCT MEETS EUROPEAN UNION DIRECTIVES AND OTHER COUNTRY REGULATIONS AS DESCRIBED IN GS-22-008.
2. LEADFREE OR RoHS DIRECTIVE LABELLING TO BE PROVIDED AS PER GS-14-920.
3. " LF " SUFFIX TO PRODUCT NUMBER FOR RoHS COMPATIBLE/ LEADFREE VERSION.
4. PARTS WITH AND WITHOUT "LF " SUFFIX ARE FORM-FIT AND FUNCTIONALLY IDENTICAL. " LF " SUFFIX PROVIDED FOR PART NUMBER STANDARDISATION OF PART THAT MEETS RoHS REQUIREMENTS.

mat'l. code see table		surface ISO 1302	tolerance ISO 406	projection ISO 1101	product family
ltr	ecn no	dr	date	tolerances unless otherwise specified	title
D	H00418	MVI	1990-09-07	angles	LOCKING LATCH
E	H20708	MVI	1992-11-03	linear	
F	F10129	VIB	2001-02-05	scale -	
G	I05-0042	MINI	2005-03-17	dr	M.Visschers
H	I05-0248	MINI	2005-11-22	engr	1990-08-31
J	I06-0086	MINI	2006-06-01	chr	Rakhee George
				appd	Rakhee George
sheet index	revision sheet	J	1		



product family
title
LOCKING LATCH
dwg no
65182
sheet 1 of 1
size
A3
type
CUSTOMER Drawing



Copyright FCJ